

Socio-Economic Schemes:

There will be three elements to the new Rural Development Programme for England's Socio-Economic Schemes

- **Countryside Productivity Scheme:**
- **England Growth Programme:**
- **LEADER:**



Countryside Productivity Scheme

Schemes expected to start in England in 2015...			
Scheme >>	Countryside Productivity	Growth Programme	LEADER
Aim:	To support improvements in farm and forestry productivity	To encourage strong rural economic growth and create new jobs	To support jobs and growth in the local rural economy
Target Beneficiaries:	Farmers and forest holders	Rural businesses	Farmers, forest holders, rural businesses and rural communities
Delivery Organisation:	Rural Payments Agency	Local Enterprise Partnerships	Local Action Groups
EAFRD Budget:	£141m	£177m (£5bn)	£138m
Project Selection:	Rural Payments Agency	Rural Payments Agency	Local Action Groups

Capital Grants Scheme

Planning for early 2015 launch, when details of what will be funded will be announced...

- For farm businesses, woodland owners and forestry contractors
- Capital Investments – supported by business plan
- Small Grants: £2,500 to £35,000
- Large Grants: £35,000 to £500,000
- 40% intervention rate
- No Rounds - but reviewed in July 2015

Aim:

To increase the productivity of farm and forestry businesses (improve ratio of outputs to inputs)

Focusing on:

- **Innovation** - in practice and take-up of new technology.
- Improving - **resource efficiency, environmental sustainability and animal health and welfare.**
- Improving the **skills base of the sector.**
- Increasing **business income** and profit.
- Creation of **employment.**
- **Resilience** - to mitigate against external factors.
- **Succession** - support for new entrants.

Business Start-Up

Up to 70,000 euros (£52,000) for young farmers or new entrants.

LEADER Policy Priorities

- Support for increasing farm productivity e.g. marketing and development of products
- Support for small enterprises and farm diversification e.g. business start-up aid
- Support for rural tourism
- Provision of rural services e.g. village facilities
- Support for cultural and rural heritage
- Support for increasing forestry productivity

Integrated Projects

- High impact animal disease.
- Improving nitrogen efficiency.
- Wood fuel supply chain.

Skills and Advice

Delivered via the Skills Framework but with increased focus on knowledge exchange and demonstration activity.

European Innovation Partnership

The set up, and running, of Operational Groups to conduct projects.

England Growth Programme

Local Enterprise Partnerships, (LEPs) will set priorities for local funding. Contact your local LEP for funding priorities in your area. Find your local LEP at www.lepnetwork.net/leps.

Once local funding opportunities are announced in early 2015, people will be able to apply for funding through the RPA.

Money will be available for:

- Small / micro businesses to:
 - buy equipment or develop new products that help create jobs.

- help new businesses with start-up costs.
- Medium-sized businesses that process agricultural products.
- Employee training in rural businesses.
- Infrastructure technology projects:
 - to provide broadband coverage in hard-to-reach areas, e.g. by using mobile and satellites.
 - to support renewables projects, e.g. power generation and local heat distribution networks.
- Promoting rural tourism, through grants for individual businesses and collaborative projects.

LEADER Local Action Groups

(Cumbria County Council)
Cumbria Fells & Dales / Solway, Borders & Eden
Tel: 01900 706 028 info@fellsanddales.org.uk

(Lancashire County Council)
Lancashire North and Bowland / Lancashire Pennine Moors / Lancashire West
Tel: 01772 538 797
Email: karen.kerrigan@lancashire.gov.uk

(Cheshire West and Chester Council)
Northern Marches / North East Cheshire
Tel: 07734 132405 / 01244 973297
www.cheshirewestandchester.gov.uk

Environmental Schemes:

WATER GRANTS

Opens to applications March 2nd 2015

Catchment Sensitive Farming (CSF) is pleased to announce that it will be facilitating applications for 2015 Water Grants, which are now part of the Countryside Stewardship Scheme.

This grant will be available to farmers within a targeted section of certain river Catchments in the North West (consult the Magic Maps website - magic.defra.gov.uk - or contact your local catchment sensitive farming officer to see if your farm is in a target area, see details on the right of this page). The application process will be similar to that of previous CSF Capital Grant Schemes.

This grant is available for works that will help to reduce diffuse pollution from agriculture and in turn, improve water quality.

The application window will be open from **2nd March 2015 until 31st April 2015**. As in previous years, the grant offers **50% of funding** towards works up to the value of **£10,000 per holding**.

There are many items that could be suitable for grant funding such as: *yard works, roofing over slurry / silage stores, livestock gathering areas, hardcore tracks or hardcore bases for livestock drinkers and feeders, livestock troughs, cross drains, sediment ponds and traps and post and wire fencing.*

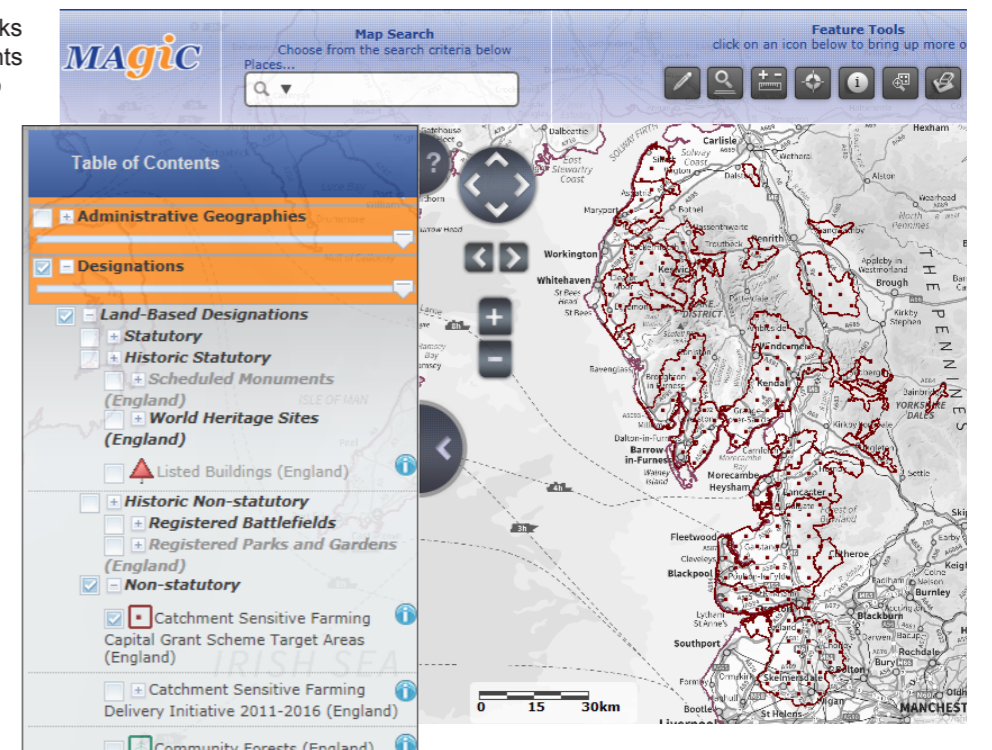
A handbook detailing all of the capital works items available under the 2015 Water Grants will be made available in **late February**. To obtain a copy, please visit www.gov.uk where the handbook and application form will be made available to be viewed and printed in due course. Further details should be found at the address below.

<https://www.gov.uk/farming-food-grants-payments/environmental-land-management>

How to see if your farm is in a target area for water grants: You can either contact your local CSF officer (above right) or select target areas from the table of contents on the magic maps website www.magic.defra.gov.uk and zoom in on the map (right).



River Catchment	CSF Officer	Telephone
River Wyre	Richard Rhodes	01524 791 618 / 07955 198 221
Bassenthwaite & Derwent	Susan Kenworthy	07827 357 205
River Duddon	Emma Almond	0300 060 2636 / 07778 829 753
W. Cumbria (Ellen)	Bunty Wright	07799 350 159
W. Cumbria (Ehen & Keekle)	Susan Kenworthy	07827 357 205
Lower Lune	Liz Graydon	0300 060 4522 / 07833 400 404
Rivers Kent and Levens	Emma Almond	0300 060 2636 / 07778 829 753
River Ribble	Sarah Fell	07717 355 669
River Eden & Tributaries	Chris Turner	01931 715 646 / 07771 977 355
River Dane	Charlotte Johnson	07919 555 356



Countryside Stewardship

A number of Countryside Stewardship schemes will be made available during 2015. Applications are expected to start in the summer for the main scheme. Further info will be made available at www.gov.uk

<https://www.gov.uk/government/collections/common-agricultural-policy-reform>

If you are considering applying for any of the available 2015 grants please be advised that you must register on the new Rural Payments system at www.gov.uk/rural-payments as soon as possible. If you have any problems with registering then please contact the Rural Payments Agency Tel: 03000 200 301.

Woodland Capital Grants 2015 is one such new scheme which, like the water grants, is now part of Countryside Stewardship. Grants are available for woodland creation, addressing tree health issues and creating management plans.

Tree Health and Management Plans - Application window: **17th Feb 2015 - 30th June 2015**

Woodland Creation - Application window: **17th Feb 2015 - 30th April 2015**

The funding is a contribution towards the costs of carrying out the work. For woodland creation, there is a limit of £6,800 per hectare for planting and protection.

For further info go to: <https://www.gov.uk/government/publications/guide-to-countryside-stewardship-woodland-capital-grants-2015/guide-to-countryside-stewardship-woodland-capital-grants-2015>